

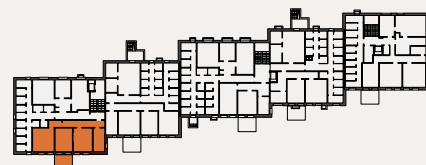
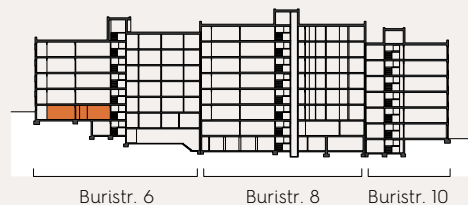
Masstab 1:100

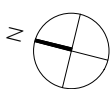
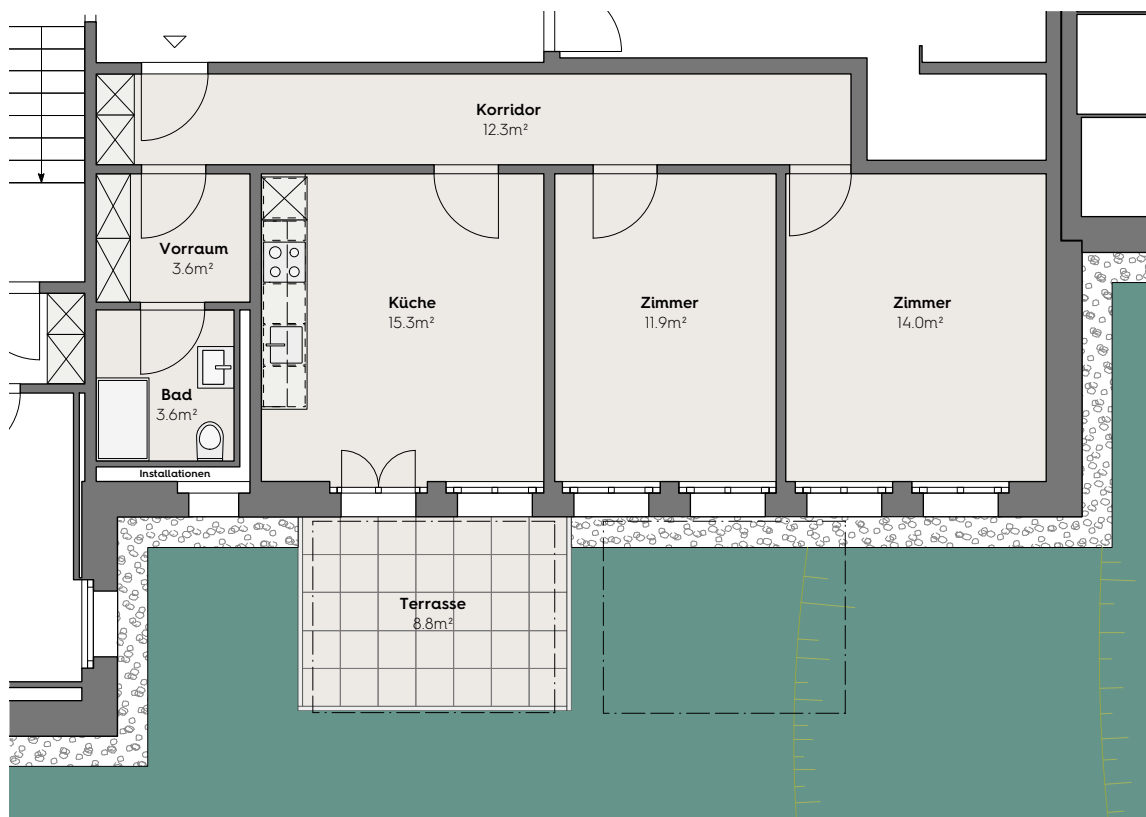
0m 2m 5m

Buristrasse 6 Haus 1

2 Zimmer Wohnung

Nettowohnfläche	60m ²
Nettowohnausenfläche	9m ²
Gesamtwohnfläche	69m ²
Wohnungs-Bezeichnung	HA 01 001





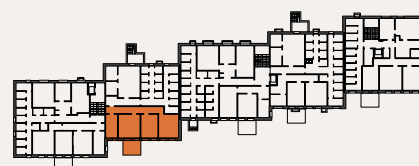
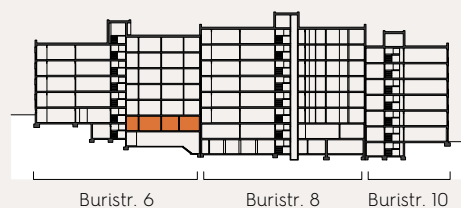
Masstab 1:100

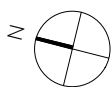
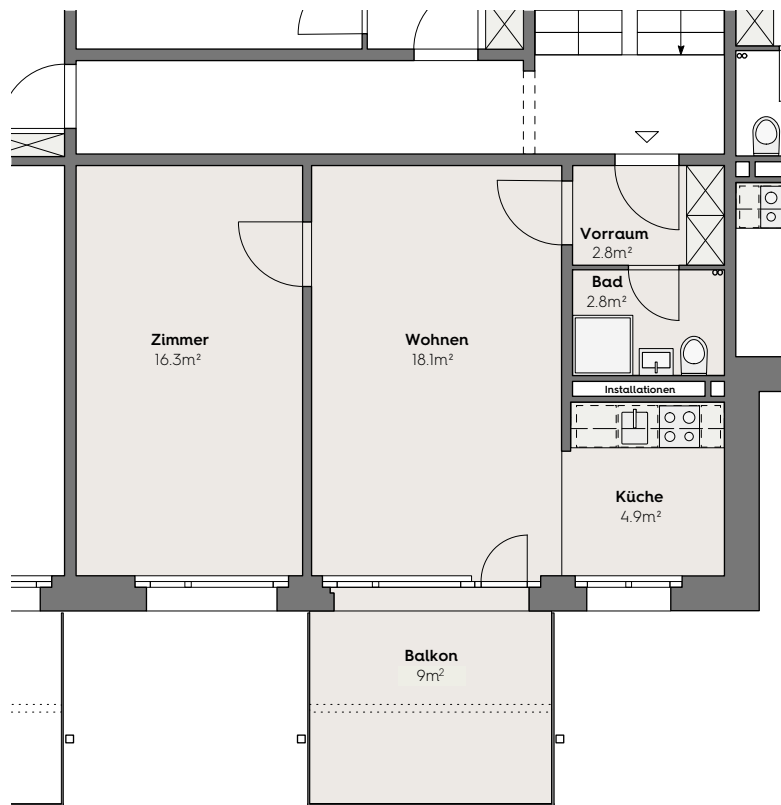
0m 2m 5m

Buristrasse 6 Haus 1

2 Zimmer Wohnung

Nettowohnfläche	61m ²
Nettowohnausenfläche	9m ²
Gesamtwohnfläche	70m ²
Wohnungs-Bezeichnung	HA 01 002





Masstab 1:100

0m 2m 5m

Buristrasse 6 Haus 1 / Buristrasse 8 Haus 2

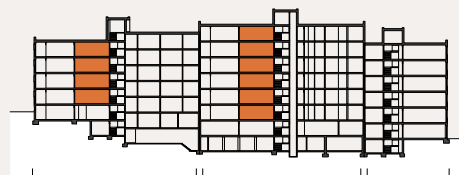
2 Zimmer Wohnung

Nettowoohnfläche 45m²

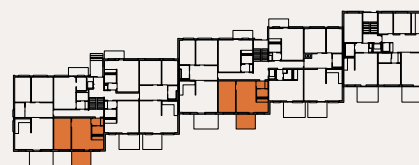
Nettowoohnausenfläche 9m²

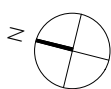
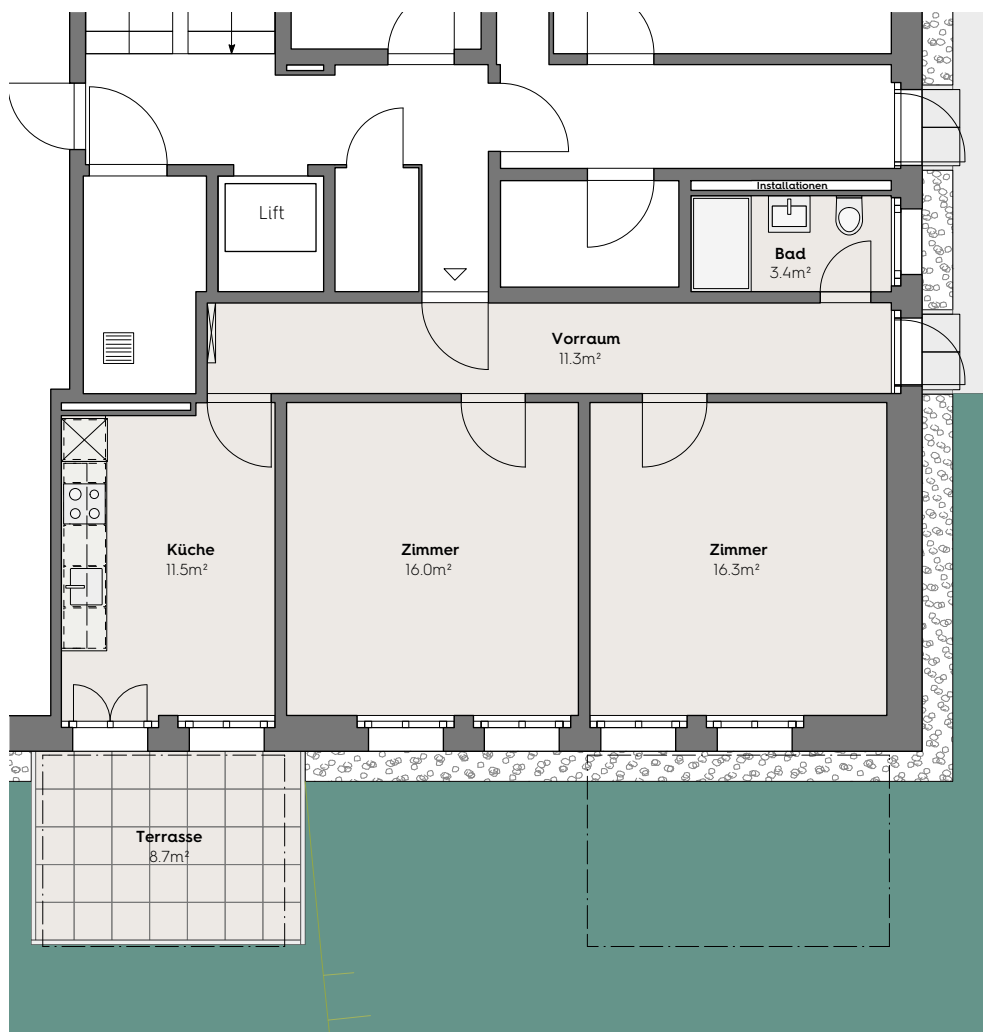
Gesamtwoohnfläche 54m²

Wohnungs-Bezeichnungen	HA 01 104	HA 02 104
	HA 01 204	HA 02 204
	HA 01 304	HA 02 304
	HA 01 404	HA 02 404
		HA 02 504
		HA 02 604



Buristr. 6 Buristr. 8 Buristr. 10





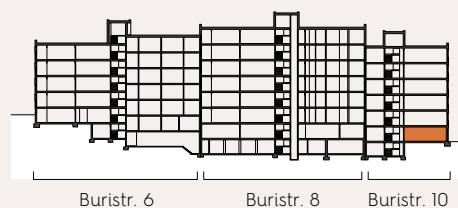
Masstab 1:100

0m 2m 5m

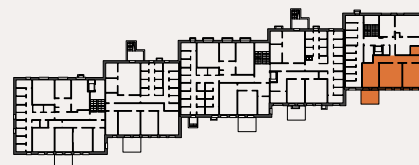
Buristrasse 10 Haus 3

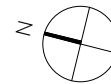
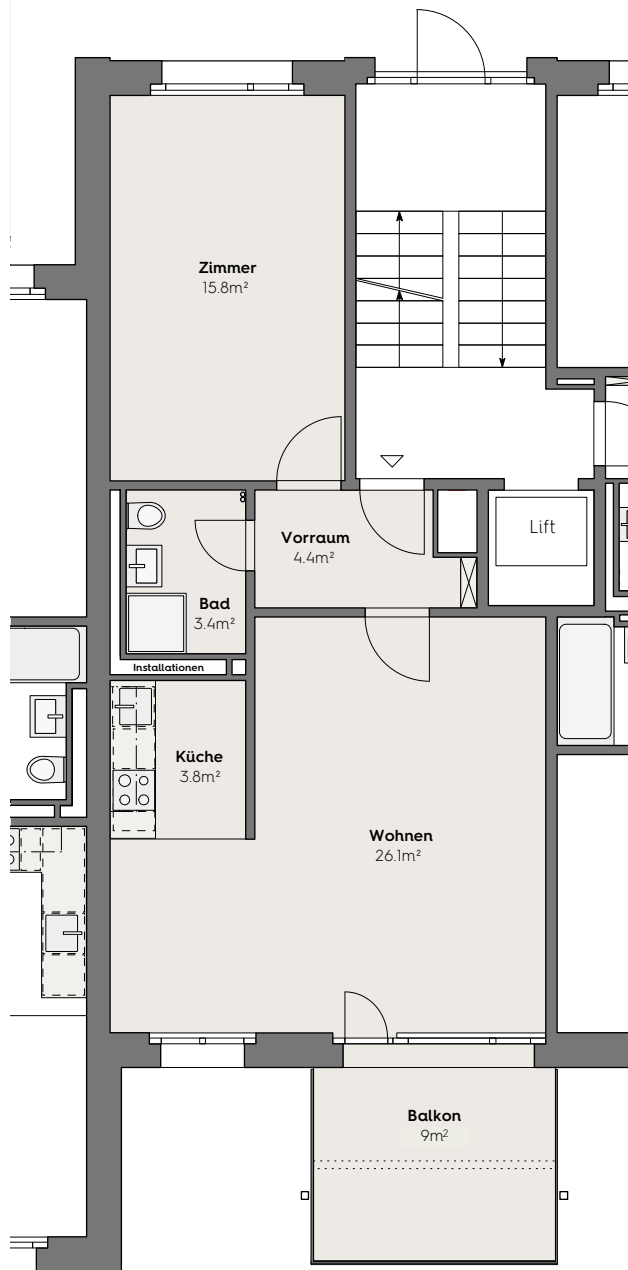
2 Zimmer Wohnung

Nettowoohnfläche	59m ²
Nettowoohnausenfläche	9m ²
Gesamtwohnfläche	68m ²
Wohnungs-Bezeichnung	HA 03 001



Buristr. 6 Buristr. 8 Buristr. 10





Masstab:100

0m 2m 5m

Buristrasse 10 Haus 3

2 Zimmer Wohnung

Nettowoohnfläche	54m ²
Nettowoohnausenfläche	9m ²
Gesamtwohnfläche	63m ²
Wohnungs-Bezeichnungen	HA 03 102 HA 03 202 HA 03 302 HA 03 402 HA 03 502

