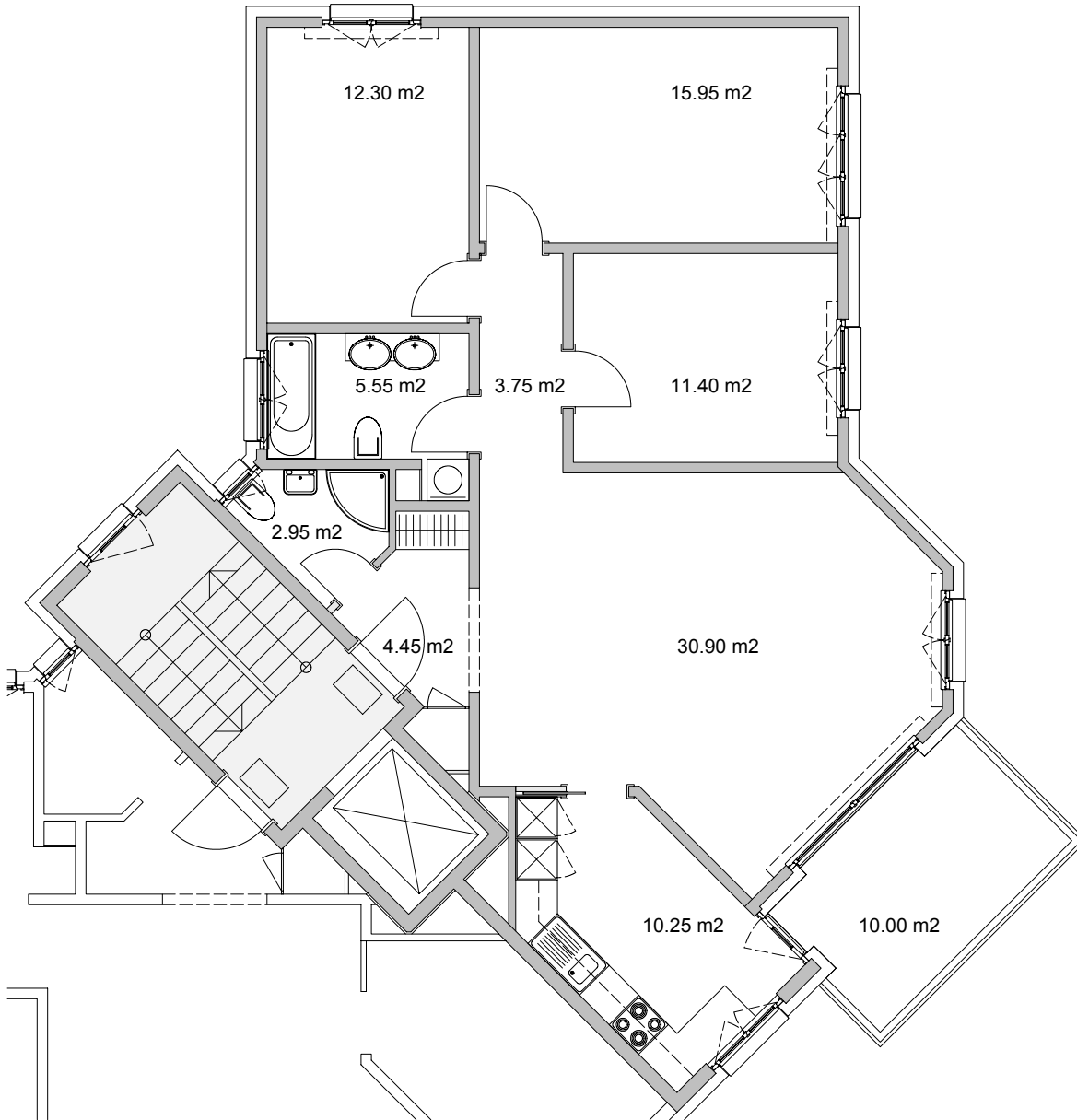
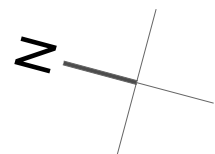




DOSSIER N°151
 ROUTE DU POSTILLON 9
 COURTEPIN
 APPARTEMENT N°151.01.032
 4 PIECES - ETAGE 3



CUISINE	10.25	m ²	CHAMBRE 1	12.30	m ²	SURFACE NETTE	97.50	m ²
SALLE DE BAINS	5.55	m ²	CHAMBRE 2	15.95	m ²	SURFACE GALANDAGE	0.65	m ²
HALL ENTREE	4.45	m ²	CHAMBRE 3	11.40	m ²			
DEGAGEMENT	3.75	m ²	CHAMBRE 4	30.90	m ²			
WC	2.95	m ²						
						SURFACE APPARTEMENT	98.15	m ²
BALCON	10.00	m ²				SURFACE TOTALE	108.15	m ²



1 centimetre = 1 metre